

HIGH PROFILE LAND FOR SALE

East Lansing, MI

INGHAM COUNTY

VACANT LAND
1.59 ACRES
EAST LANSING, MI

Located on Lake Lansing
Road at Saginaw Highway



SALE TERMS

- Sale Price: \$595,000
- Sale Price per Acre: \$374,213
- Terms: Cash or New Mortgage

SALIENT FACTS

- Acreage: 1.59 Acres
- Square Footage: 69260 SF
- Zoning: B-2

TAX DATA

- Parcel No.: 33-20-02-09-101-020
- Taxing Authority: East Lansing
- 2008 SEV: \$84,600
- 2008 Taxable Value: \$84,600

STATISTICAL & AREA DATA

- Daily Traffic Count:
 - 12,100 on Saginaw Hwy.
- Demographics:
 - 1 MILE - Population: 5,734
Median Income \$53,497
 - 3 MILES - Population 72,990
Median Income \$35,807
 - 5 MILES - Population 147,028
Median Income \$39,129

For more information, contact:

Todd Kosta
Associate
Retail Advisor
517.319.9214
todd.kosta@cbre.com

CB Richard Ellis/Martin
1111 Michigan Ave., Suite 201
East Lansing, MI 48823
T 517.351.2200
F 517.351.2201

www.cbrelansing.com

©2008, CB Richard Ellis, Inc. We obtained the information above from sources we believe to be reliable. However, we have not verified its accuracy and make no guarantee, warranty or representation about it. It is submitted subject to the possibility of errors, omissions, change of price, rental or other conditions, prior sale, lease or financing, or withdrawal without notice. We include projections, opinions, assumptions or estimates for example only, and they may not represent current or future performance of the property. You and your tax and legal advisors should conduct your own investigation of the property and transaction.

CBRE | Martin
CB RICHARD ELLIS

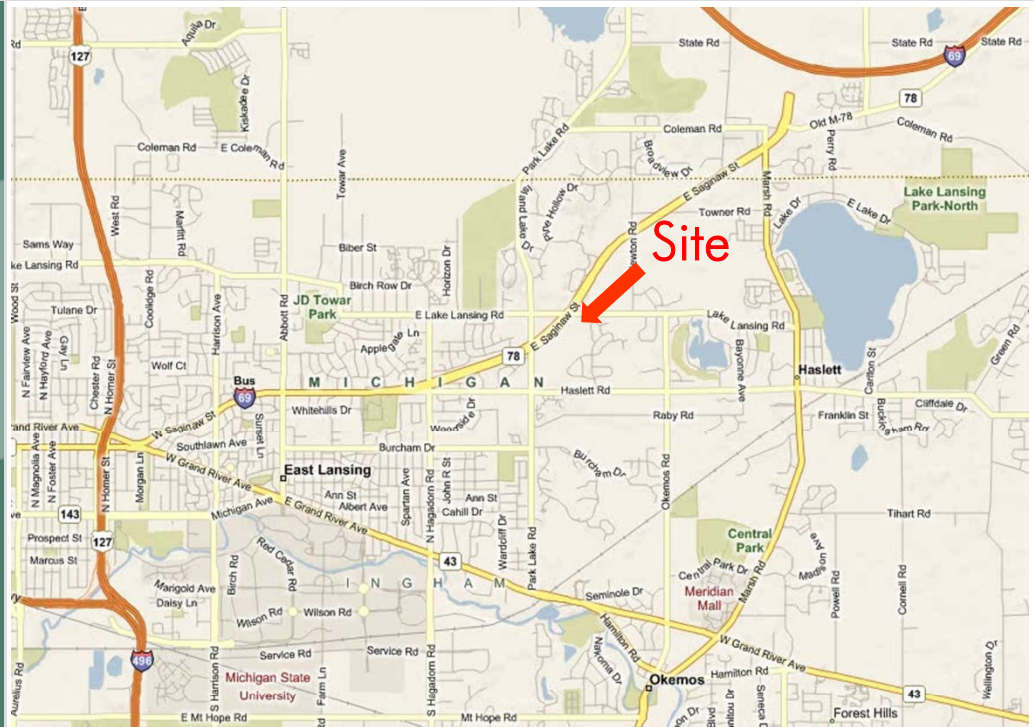
HIGH PROFILE LAND FOR SALE

East Lansing, MI

INGHAM COUNTY

VACANT LAND
1.59 ACRES
EAST LANSING, MI

Located on Lake Lansing Road at Saginaw Highway

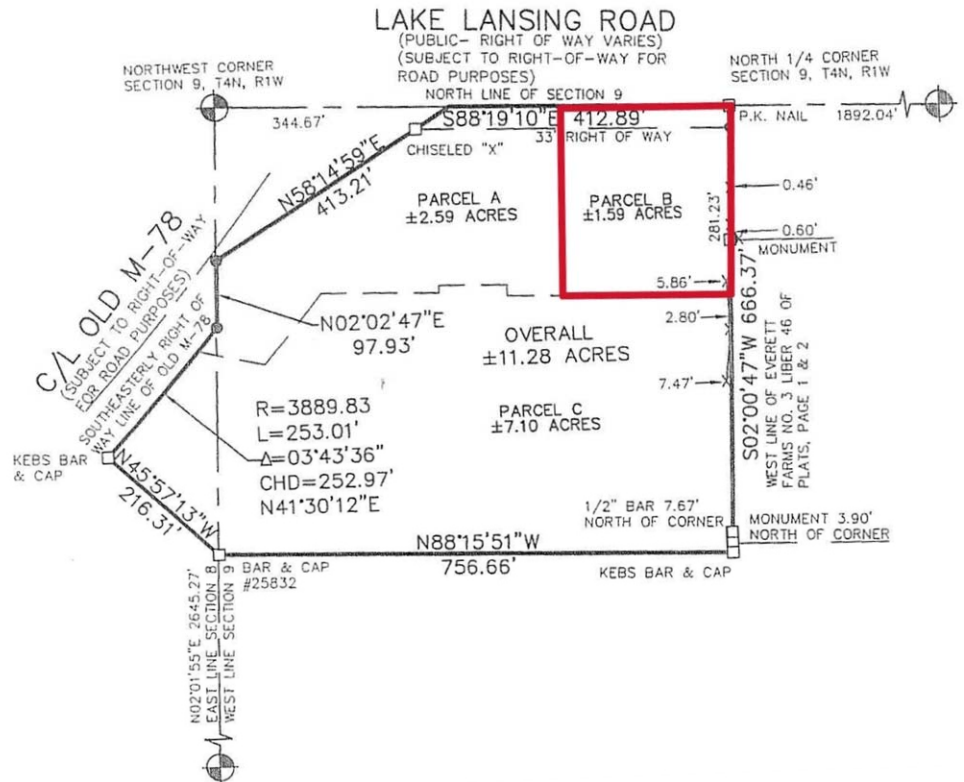


For more information, contact:

Todd Kosta
Associate
Retail Advisor
517.319.9214
todd.kosta@cbre.com

CB Richard Ellis/Martin
1111 Michigan Ave., Suite 201
East Lansing, MI 48823
T 517.351.2200
F 517.351.2201

www.cbrelansing.com



©2008, CB Richard Ellis, Inc. We obtained the information above from sources we believe to be reliable. However, we have not verified its accuracy and make no guarantee, warranty or representation about it. It is submitted subject to the possibility of errors, omissions, change of price, rental or other conditions, prior sale, lease or financing, or withdrawal without notice. We include projections, opinions, assumptions or estimates for example only, and they may not represent current or future performance of the property. You and your tax and legal advisors should conduct your own investigation of the property and transaction.

CBRE | Martin
CB RICHARD ELLIS